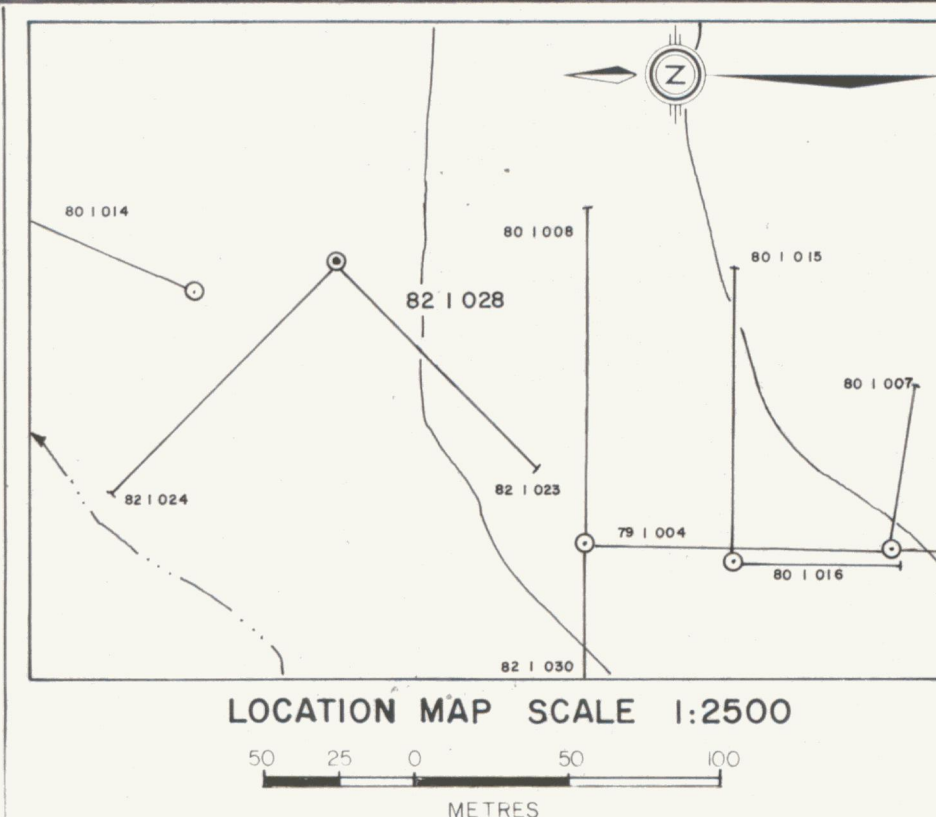
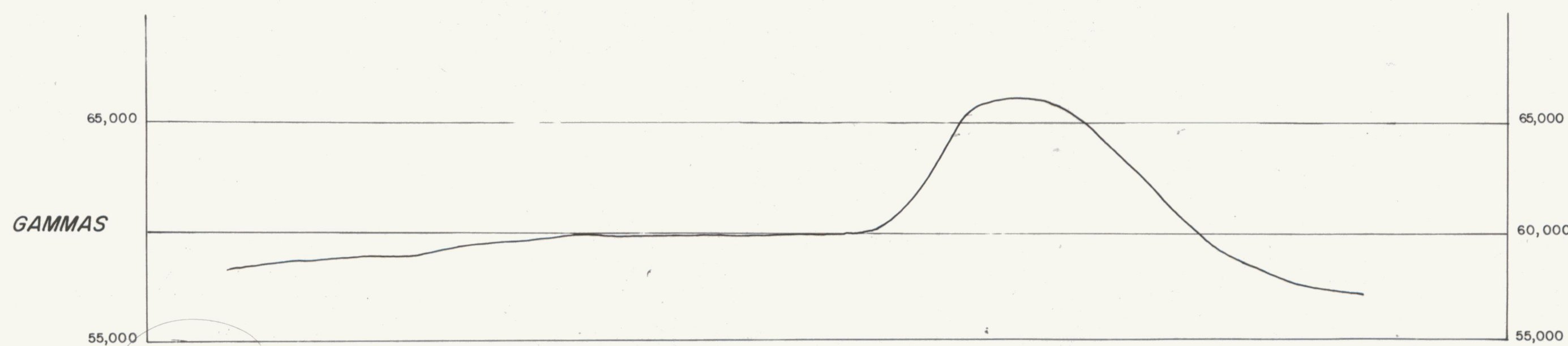
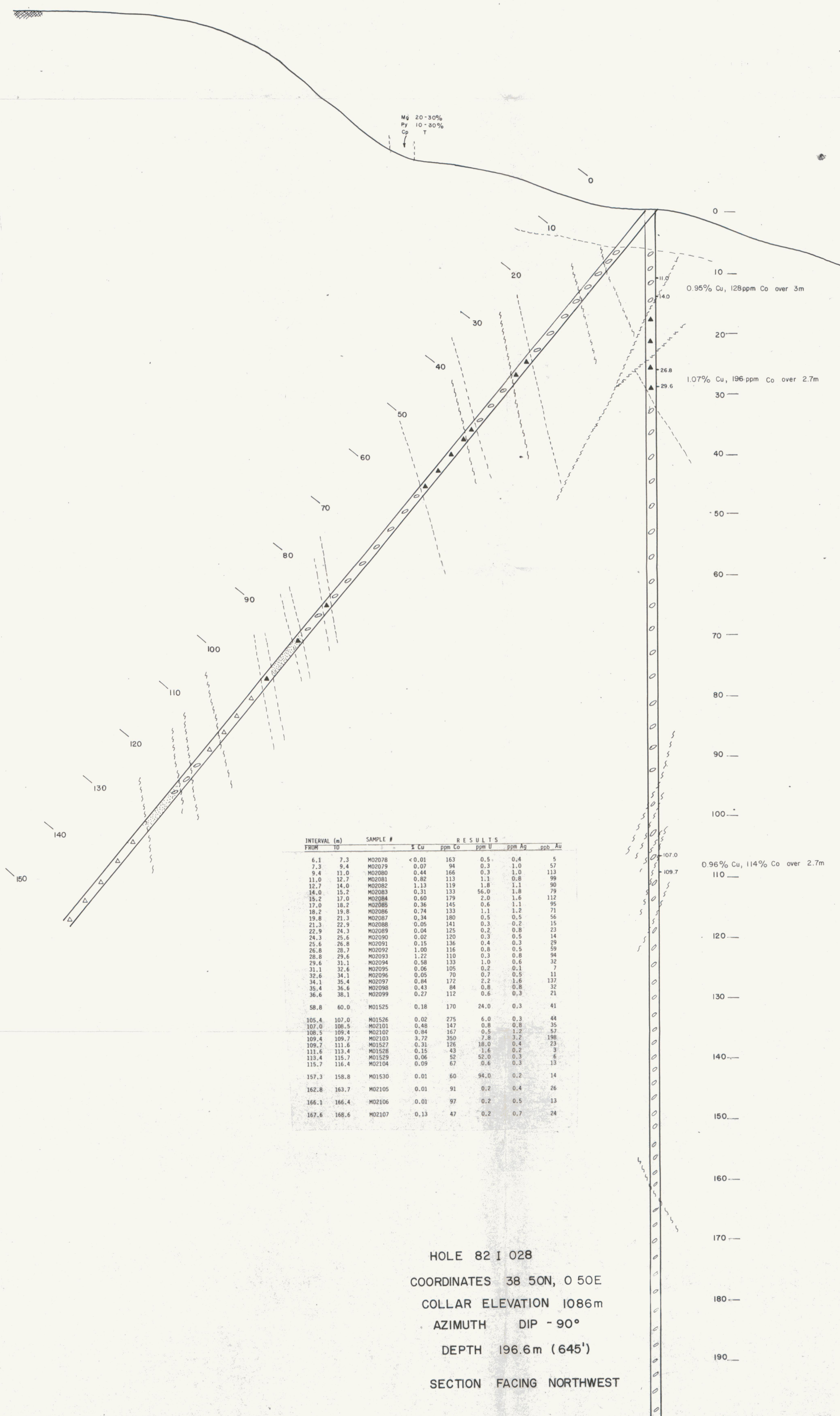


# MAGNETIC PROFILE



## LEGEND

- Chloritic breccia (Hb 4) - dark green chloritic matrix & fragments, often hematitic, associated with Hb 3 fault zones.
- Clast deficient breccia (Hb 3) - euhedral to subhedral magnetite, often hematitic, associated with pyrite, chalcocopyrite, barite and carbonate.
- Interclastic breccia (Hb 2) - with chlorite, albite, hematite, carbonate alteration of rock fragments and matrix.
- Homoclast breccia (Hb 1) - strongly foliated and bleached fragments of Q2a in a carbonate matrix.
- Quartzite Group (Q2) - siltstones and phyllites.
- Fault.
- Gossan.
- Mineral occurrence.
- Single rock location with % of various minerals.
- Trace.
- Chalcocopyrite.
- Pyrite.
- Magnetite.
- Hematite.
- Malachite.
- Azurite.
- Barite.
- Siderite.



HOLE 82 I 028  
 COORDINATES 38 50N, 0 50E  
 COLLAR ELEVATION 1086m  
 AZIMUTH DIP - 90°  
 DEPTH 196.6m (645')  
 SECTION FACING NORTHWEST

Figure WJV82 - 17

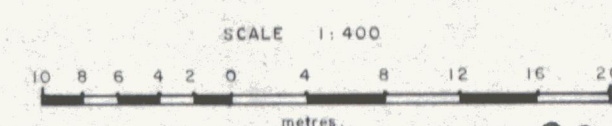
ARCHER, CATHRO & ASSOCIATES (1981) LIMITED

SECTION HOLE 82 I 028

IGOR PROPERTY

WERNECKE JOINT VENTURE

W. D. G. Galt  
 For 10/83



091445

To accompany report dated December, 1982.